

# Venue Hire



Located in the centre of Dublin's cultural quarter, overlooking Merrion Square, the National Gallery of Ireland has a variety of unique venue spaces which will provide an unforgettable experience for any private or corporate event.

Our elegant spaces can accommodate drinks receptions, gala dinners, conferences and meetings, and weddings. Your event can be as small as 10 guests or as large as 300 guests, and we can guarantee that all will have a memorable evening.

An evening at the Gallery would not be complete without private views of pieces from our collection and special exhibitions. Talk to us to find out more about how to arrange tours for your event.

## Daytime Rental at the National Gallery of Ireland \

### 09:15-17:15

Venue	Mon	Tue	Wed	Thur	Fri	Sat	Sun
No. 5	✓	✓	✓	✓	✓	✓	✓
Wintergarden							
Atrium							
Lecture Theatre	✓	✓	✓	✓	✓	✓	✓

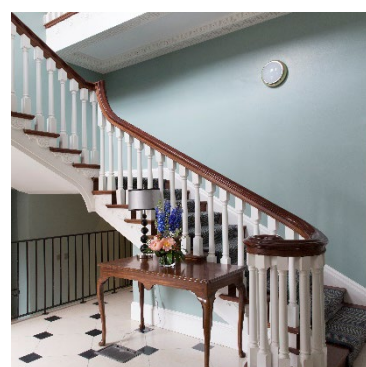
## Evening Rental at the National Gallery of Ireland \

### 18:15-22:30

Venue	Mon	Tue	Wed	Thur	Fri	Sat	Sun
No. 5	✓	✓	✓	✓	✓	✓	✓
Wintergarden	✓	✓	✓		✓	✓	✓
Atrium	✓	✓	✓		✓	✓	✓
Lecture Theatre	✓	✓	✓	✓	✓	✓	✓

events@ngi.ie  
01 6633512  
nationalgallery.ie

## Georgian Rooms \ at No. 5



Our suite of elegant Georgian Rooms at No. 5 South Leinster Street offer a variety of options for your event. The recently refurbished rooms can accommodate meetings, dinners, workshops and receptions, and we are certain your guests will enjoy being surrounded by works from the national collection.

This unique space has the luxury of its own private entrance. Your guests will be thrilled with the exciting experience of being in a part of the Gallery accessible only to Friends.

Deepen the connection to the Gallery by incorporating a tour into your evening or to break up the humdrum of an all-day meeting. We are happy to organise private tours of the collection.

Dimensions	<b>Lavery Room: 9m x 5.9m</b> <b>Clarke Room: 10.5m x 5.7m</b> <b>Purser Room: 5.7m x 5.4m</b>
Capacity	<b>Dinner: 50 people</b> <b>Reception: 50 people</b> <b>Meetings: 22 people (Depending on required setup)</b> <b>Lecture: 40 people</b>
Rental Cost	<b>Full Day: €1,000+VAT</b> <b>Half Day: €800+VAT</b> <b>Evening: €2,500+VAT</b> <b>Weekend Evening: €3,500+VAT</b>
Public Liability Insurance	<b>Public Liability Insurance must be put in place for an event, and is the responsibility of those hiring the venue. Cover to the value of €6,500,000 is required.</b>

events@ngi.ie  
 01 6633512  
 nationalgallery.ie

# Atrium \

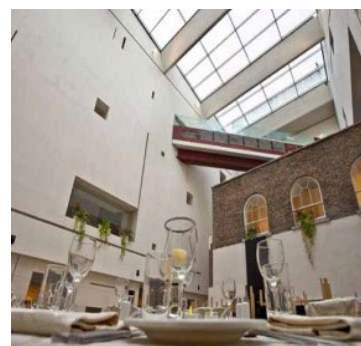
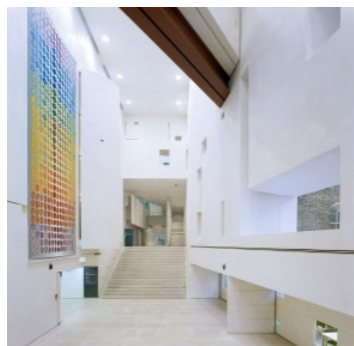


The Atrium is a spacious and light-filled venue with a double-height roof. This space can accommodate up to 70 for dinner and 100 for a reception.

Centrally located in the heart of the building's Beit Wing, its close proximity to the galleries make it an ideal location for a drinks reception incorporating tours of the collection.

Dimensions	<b>20.35m x 6.36m</b>
Capacity	<b>Dinner: 70 people Reception: 100 people Lecture: 100 people</b>
Rental Cost	<b>Evening: €4,000+VAT Weekends: €6,000+VAT</b>
Public Liability Insurance	<b>Public Liability Insurance must be put in place for an event, and is the responsibility of those hiring the venue. Cover to the value of €6,500,000 is required.</b>

# Wintergarden \ and Millennium Foyer



Originally the garden of the Georgian house overlooking it, the Wintergarden is a bright, double-height space located in our Millennium Wing.

Functioning as our café by day, this space becomes an elegant and exciting venue space by night and lends itself to a variety of events.

We are happy to organise private tours of the collection, in the adjoining galleries, as part of your event.

Dimensions	<b>Wintergarden: 12.5m x 11.9m</b> <b>MW Foyer: 23m x 6.6m</b>
Capacity	<b>Dinner: 160 people</b> <b>Reception: 300 people</b> <b>Lecture: 120 people</b>
Rental Cost	<b>Evening: €4,000+VAT</b> <b>Weekends: €6,000+VAT</b>
Public Liability Insurance	<b>Public Liability Insurance must be put in place for an event, and is the responsibility of those hiring the venue. Cover to the value of €6,500,000 is required.</b>

# Lecture \ Theatre



The Lecture Theatre at the National Gallery of Ireland is a comfortable and centrally located conference facility with a capacity of 260 seats in fixed theatre style. It is a fully equipped auditorium with an integrated projector, audio system and free Wi-Fi service. Host your conference, presentations or panel discussion with the confidence that all of your needs will be attended to. Deepen the connection to the Gallery by incorporating a tour to break up an all-day meeting. We are happy to organise private tours of the collection.

Dimensions	<b>15.6m x 8.5m</b>
Capacity	<b>Lecture: 260 people</b>
Rental Cost	<b>Half Day: €1,000+VAT Full Day: €1,800+VAT Evening: €4,000+VAT Weekend Evening: €6,000+VAT</b>
Equipment Available	<b>Projector - Screen - Lectern - Lectern Mic - 2 Roving Mics - 2 Lapel Mics - 3 Table Mics</b>
Public Liability Insurance	<b>Public Liability Insurance must be put in place for an event, and is the responsibility of those hiring the venue. Cover to the value of €6,500,000 is required.</b>

# Courtyard \



*Joseph Walsh (b.1979)  
Magnus Modus, 2017  
Olive ash, white oil finish, base: Kilkenny limestone  
H 7450mm x W 265mm x D 17750mm*

The Courtyard was created by architects Heneghan Peng as part of the refurbishment of the historic wings. Situated between the Dargan Wing (1864) and the Milltown Wing (1903) on Merrion Square, the Courtyard is the perfect light-filled venue for a reception or networking event.

This space is exclusive to Corporate Partners, and is not available for individual private hire. Please contact the Events Team at [events@ngi.ie](mailto:events@ngi.ie) for more information about Corporate Partnerships.

Dimensions	<b>45.28m x 6m</b>
Capacity	<b>Reception: 220 people</b>
Rental Cost	<b>Exclusive to Corporate Partners. Please contact the Events Team at <a href="mailto:events@ngi.ie">events@ngi.ie</a> for more information.</b>
Public Liability Insurance	<b>Public Liability Insurance must be put in place for an event, and is the responsibility of those hiring the venue. Cover to the value of €6,500,000 is required.</b>

events@ngi.ie  
01 6633512  
nationalgallery.ie

# Shaw \ Room



One of the most stunning spaces in the Gallery is the Shaw Room, named after George Bernard Shaw. Shaw bequeathed one third of his royalties to the National Gallery of Ireland, which he documented as being of significant influence throughout his childhood. The Shaw Room was part of the historic wings refurbishment project, and is home to Daniel Maclise's *The Marriage of Aoife and Strongbow* (1854). The Shaw Room is a gorgeous venue for gala dinners or receptions.

This space is exclusive to Corporate Partners, and is not available for individual private hire. Please contact the Events Team at [events@ngi.ie](mailto:events@ngi.ie) for more information about Corporate Partnerships.

Dimensions	<b>26.9m x 10.75m</b>
Capacity	<b>Dinner on Long Tables: 252 people</b> <b>Dinner on Round Tables: 170</b> <b>Reception: 300 people</b> <b>Lecture: 200 people</b>
Rental Cost	<b>Exclusive to Corporate Partners. Please contact the Events Team at <a href="mailto:events@ngi.ie">events@ngi.ie</a> for more information.</b>
Public Liability Insurance	<b>Public Liability Insurance must be put in place for an event, and is the responsibility of those hiring the venue. Cover to the value of €6,500,000 is required.</b>

[events@ngi.ie](mailto:events@ngi.ie)  
01 6633512  
[nationalgallery.ie](http://nationalgallery.ie)