

What's On

Exhibitions \ Collection \ Events

Winter 2017 Issue no: 3

nationalgallery.ie



GAILEARÁI
NÁISIUNTA[™]
HÉIREANN

NATIONAL
GALLERY_{of}
IRELAND

Winter Highlights



Jennie Whiting, Brenda Burton and Lucille Redmond (relatives of Burton) at the opening of the exhibition *Frederic William Burton: For the Love of Art*
Photo © Fennell Photography. Photographer Iain White

Seasonal Delights

Come in from the cold this winter to a packed programme of events at the National Gallery of Ireland. From free drop-in family workshops and tours of the collection to classical and contemporary music performances, there is something for all to enjoy. Festive activities include the *Christmas Family Art Holiday* on Sunday 31 December (11.30am-1.30pm), and the annual exhibition of Turner watercolours in January which will feature alongside new work by Niall Naessens.

Visitors to the Gallery

We have been delighted to welcome over one million visitors to the Gallery in 2017. Following the reopening of the refurbished galleries on 15 June, the Gallery's attendances have increased by over 100%. We hope many more visitors will enjoy exploring our collections and special exhibitions, and taking part in the many events in our public education programme in the year ahead.

For the Love of Art

The exhibition *Frederic William Burton: For the Love of Art* (until 14 January 2018) has been delighting audiences since it opened in October. This fascinating exhibition reveals the full breadth of talent behind the painter who created Ireland's favourite painting, *Hellelil and Hildebrand, the Meeting on the Turret Stairs*. Great concession offers from €5, see www.nationalgallery.ie.

For further information visit:
www.nationalgallery.ie

Engage with Burton

Discover more about Burton on the Gallery's website or view images from the exhibition on social media. There are also many wonderful education events – pick up a free booklet from the Information Desk, or download the programme online www.nationalgallery.ie

Christmas Gift Ideas

Drop in to the Gallery Shop this Christmas to browse through beautiful stationery, Irish handcrafted goods and our latest publications, such as the National Gallery of Ireland 2018 Calendar (€12.00) and Diary (€19.95HB) or the DVD of the documentary, *Portrait of a Gallery* (€19.95).

Gift Vouchers

Gift vouchers for the Burton exhibition are available online www.nationalgallery.ie. Also on offer are tickets for *Flavours of Art: Illuminating Interpretations* on Thursday 25 January which includes a guided tour, followed by supper with a glass of wine and music. Tickets €35 per person are available to purchase online. Or give a gift of Friends membership, **E** friends@ngi.ie
T +353 (0) 1 661 9877.

Upcoming Exhibitions

'Good Morning Mr Turner' Niall Naessens and JMW Turner 1-31 January 2018

Emil Nolde: Colour is Life

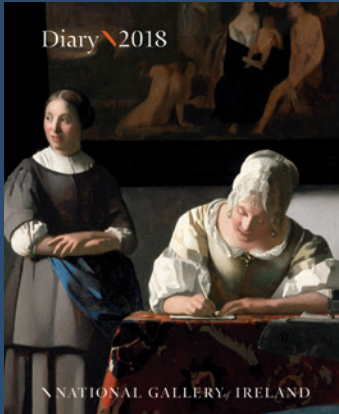
14 February - 10 June 2018

Festive Season at the Gallery

Have a break from Christmas shopping and enjoy tea, coffee and a cake in the Gallery Café, shop for gifts in the Gallery Shop, or take part in one of our festive events.

Christmas Holidays

We are closed to the public over Christmas from 24 to 26 December. Normal opening hours resume from Wednesday 27 December.



National Gallery of Ireland Diary (€19.95) and 2018 Calendar (€12.00), both available to purchase from the Gallery Shop.

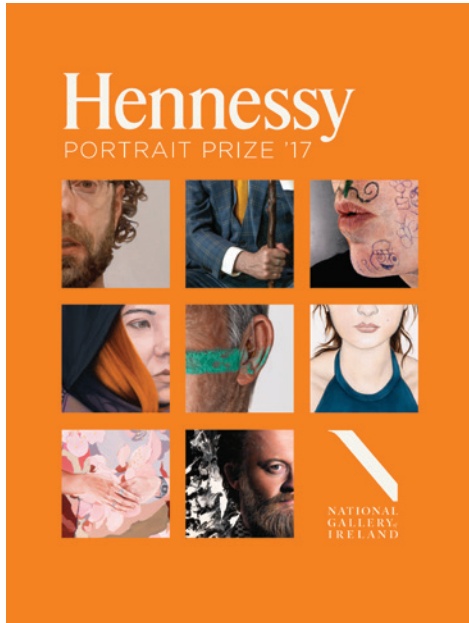


Portrait of a Gallery DVD (€19.95)



Justine Doswell as Hellelil and Rory Dignam as Hildebrand from Frederic William Burton's painting *Hellelil and Hildebrand, the Meeting on the Turret Stairs*. Photo © Fennell Photography. Photographer Iain White. Costumes designed by Vicky Berrada, Grafton Academy of Fashion Design.

Current Exhibitions



Hennessy
PORTRAIT PRIZE '17

NATIONAL GALLERY IRELAND

Hennessy Portrait Prize 2017

Until 25 February 2018

Portrait Gallery, Room 23 | Free admission

This year's exhibition of shortlisted entries from the Hennessy Portrait Prize 2017 is on display in the Portrait Gallery in the refurbished Dargan Wing. It is accompanied by a catalogue (€5), edited by Claire Crowley and Brendan Rooney. The winning artist was announced at a special awards ceremony in the Gallery on 28 November 2017, and awarded a cash prize plus a commission to produce a work for the National Portrait Collection.

See the winning portrait online

www.nationalgallery.ie

Previous winners of the Hennessy Portrait Prize are Nick Miller, Vera Klute and Gerry Davis.

For further information visit:

www.nationalgallery.ie



Niall Naessens (b. 1961)
Landscape Still on Super 8 Film
© Niall Naessens

'Good Morning Mr Turner' Niall Naessens and J.M.W. Turner 1-31 January 2018 Print Gallery | Free admission

This year the annual exhibition of Turner watercolours will be complemented by etchings and drawings by Kerry-based master printmaker Niall Naessens. Inspired by Turner's brilliant evocations of light and meteorological effects, Naessens's work juxtaposes the awe-inspiring beauty of the landscape with contemporary and mundane aspects of today's world, including electricity transformers and agricultural equipment such as muck-spreaders and tractors. A catalogue accompanies the exhibition.

Last Chance to See...

Käthe Kollwitz: Life, Death and War

Until 10 December 2017. Free admission

Frederic William Burton: For the Love of Art

Until 14 January 2018. Tickets €5-€15 from www.nationalgallery.ie

Aftermath: The War Landscapes of William Orpen

Until 11 February 2018. Free admission

Audio Guide free with ticket admission

Emil Nolde: Colour is Life

14 February - 10 June 2018

National Gallery of Ireland. Beit Wing. Admission charge

Advance ticket booking: www.nationalgallery.ie

Audio Guide free with ticket admission

**FREE for FRIENDS of the
National Gallery of Ireland**

Emil Nolde (1867-1956) *Rain over a Marsh* (detail) © Nolde Stiftung Seebüll

The German Expressionist artist Emil Nolde (1867-1956) was a prolific painter and printmaker. This exhibition, a collaboration between the Scottish National Gallery of Modern Art and the National Gallery of Ireland, will present a bold and colourful survey of his paintings, drawings, etchings, and woodcuts. Included will be scenes of Berlin café culture, calligraphic views of the River Elbe, brilliant studies made on travels to the South Seas, as well as portraits, flower paintings, and imaginative depictions of fantastical creatures in both oils and watercolours. This will be the first exhibition on Nolde in Ireland in over fifty years, with the majority of the works on loan from the Nolde Foundation Seebüll, Germany.

Tickets

Online ticket booking from February
www.nationalgallery.ie

€15 & €10 conc. €5 for students. Free for Friends of the National Gallery of Ireland, children under 16, and pre-booked school groups.

Catalogue

An accompanying illustrated catalogue will be available from the Gallery Shop. Edited by Keith Hartley, Scottish National Gallery of Modern Art, and including essay contributions by Astrid Becker, Frances Blythe, Sean Rainbird, and Christian Weikop.

See more on exhibitions:
www.nationalgallery.ie



Emil Nolde (1867-1956)
Self-portrait, 1917
© Nolde Stiftung Seebüll

Public Programme

A wide ranging public engagement programme will be tailored around the Nolde show. see www.nationalgallery.ie

Curators

Sean Rainbird and Janet McLean, National Gallery of Ireland, with Keith Hartley, Scottish National Gallery of Modern Art.

Venues

National Gallery of Ireland
14 February - 10 June 2018

Scottish National Gallery of Modern Art
14 July - 21 October 2018

Don't Miss!

Royal Irish Academy of Music

At 6.30pm on Thursday 7 December, in the Gallery's Shaw Room, the Royal Irish Academy of Music celebrates the outstanding talents of a number of musicians of world renown in a new series presented in partnership with the National Gallery of Ireland. The globally renowned flautist, Sir James Galway, opens the inaugural **RIAM/NGI International Visiting Artists Series** with a feast of flute playing featuring staff, students and his partner in life and music, Lady Jeanne Galway. Tickets €20, €15 and €10 from www.riam.ie

Study Morning:

FW Burton, A Life Defined by Art

Saturday 13 January, 10am-1.30pm €20

Frederic William Burton's career as an artist spanned 40 years while his professional career was defined by his role as director of the National Gallery, London. Chaired by Professor Fintan Cullen of the University of Nottingham, the panel of speakers will include Dr Herbert Rott of the Neue Pinakothek Munich and Dr Paul Stephen Tucker of the University of Florence.

Visit www.nationalgallery.ie for tickets, full programme and further information.

First Fortnight **heARTS & Minds**

The National Gallery of Ireland is delighted to collaborate with First Fortnight, a charity that challenges mental health prejudice through arts and cultural action, by presenting **heARTS & Minds**. Key works from the Gallery's collection, which address the subject of mental health, have been selected to inform a dedicated series of activities. This programme has been curated to include something for all ages, and comprises both free and ticketed events. There will be a special screening of the remarkable animated film, *Loving Vincent*, on Thursday 18 January at 6.30pm, followed by discussion and drinks from 8.30pm. €15/12. See www.nationalgallery.ie.

Lisa O'Neill: **Bad Romance**

For those looking for an alternative Valentine's night, on Wednesday 14 February at 6.30pm in the Gallery's Courtyard, singer-songwriter Lisa O'Neill will give a very special live, one-off show which will include the first public performance of music created in response to the exhibition *Frederic William Burton: For the Love of Art*, as well as a selection of works from O'Neill's own catalogue. Tickets €20 see www.nationalgallery.ie or from the gallery shop.

Tuesday Talk & Tea

On the second Tuesday of each month at 11am, an illustrated talk inspired by the Gallery's collection and exhibitions will be followed by a chat over tea and coffee. Tickets €5, see www.nationalgallery.ie

Flavours of Art:

Illuminating Interpretations

Join us for our popular 'Flavours of Art' event, which takes place on Thursday 25 January from 6pm to 8.30pm. Included in the ticket price are guided tours of the French and Italian collections, and the annual Turner exhibition. Tours will be followed by supper, with a glass of wine, and musical accompaniment. Tickets €35 per person from the Gallery Shop

T (0)1 663 3518 or book online:

www.nationalgallery.ie

Buy Images Online

Buy online www.nationalgalleryimages.ie and get a 20% discount. We supply high-quality digital images of works from the Gallery's collection, for Christmas cards, publications, websites, broadcasting, stationery, packaging and products. We also offer a print-on-demand service for many artworks.

E images&licensing@ngi.ie

T +353 (0) 1 663 3526/663 3527.

For further information visit:

www.nationalgallery.ie

Acquisitions

Yeats Acquisition

The National Gallery of Ireland has recently acquired a number of works by members of the Yeats family: *Portrait of Elizabeth Corbet 'Lolly' Yeats* by John Butler Yeats; *Crayfish* by Anne Yeats; *Two Sketches of John O'Leary: Sketches of Family Life* and *Three Sketchbooks, New York* by John Butler Yeats; *A Collection of Early Sketches and Illustrations*, and *Sketchbook: Ireland 1909* by Jack B. Yeats; a sketchbook, including portraits of Jack and Lily Yeats; a watercolour by Mary Cottenham Yeats; and a collection of six photographic portraits of John Butler Yeats.

Käthe Kollwitz (1867-1945)

The Gallery was delighted to acquire in 2017 two works by Käthe Kollwitz: *Working Woman with Blue Shawl*, 1903, and *Self-Portrait in Profile*, 1927 (both on display until 10 December).



John Butler Yeats (1839-1922)
Portrait of Elizabeth Corbet 'Lolly' Yeats
Photo Courtesy Sotheby's

Friends \ NATIONAL GALLERY of IRELAND

Friends go Free!

Support the National Gallery of Ireland by becoming a member and enjoy free entry to all paid exhibitions.

Benefits

Free Exhibitions \ Exclusive Previews \ Members' Room \ Free Weekly Lectures \ Events, Tours & Trips \ Special Discounts \ Quarterly Events Guide

Membership

Individual: €80 / Dual: €120 / Family: €120 / Age 65+: €70 / Student: €35 / Age 16-25: €35

E friends@ngi.ie **T** +353 (0) 1 661 9877

Patrons of Irish Art

To become a Patron of Irish Art, please contact Sarah Conroy for further details (sconroy@ngi.ie or +353 (0)1 632 5527).

Friends of the National Gallery of Ireland,
No. 5 South Leinster St, Dublin 2, Ireland



John Lavery (1856-1941), *The Artist's Studio: Lady Hazel Lavery with her Daughter Alice and Stepdughter Eileen*, 1910-1913

Féilire an Gheimhridh Winter Calendar

December 2017

Events free unless marked €.

€ **Buy Tickets**
from www.nationalgallery.ie
or the Gallery Shop
T +353 (0) 1 663 3518.

Guided Tours

Book in advance T (01) 663 3510 E tours@ngi.ie
Is féidir turais trí Ghaeilge a chur in áirithe freisin.

Audio Tours FREE

Audio guides for children and adults are available from the Information Desk.

Tá an Chlostreoir le fáil i nGaeilge. Déan fiosrú ag an Deasc Eolais.

Tailored Tours FREE

We provide Irish Sign Language tours; tours for the hard of hearing; blind/visually impaired; people with dementia and their carers; and selected community & youth groups. **Pre-book** education@ngi.ie

Friday 1 December

1.15 - **Pop-Up Talk** (*Burton exhibition ticket required*)

Saturday 2 December

10.00-5.00 - **Youth Workshop €45** *Animation: Moving Marks*
12.30 & 2.30 - Tours
2.30-5.00 - **Performance** *The Meeting* by Umbrella Theatre Company.
Lecture Theatre **€15**

For further information visit:
www.nationalgallery.ie

Sunday 3 December

11.30-1.30 - **Drop-in Family Session**
11.30 - Tour
12.30 - Family Tour
1.30 - Tour
3.00 - **Lecture** *Beyond the Trenches: William Orpen and the Materiality of War*
Emma O'Toole, NGI

Tuesday 5 December

1.15 - **Pop-Up Talk**



Ford Madox Brown (1821-1893)
The Irish Girl, 1860
Yale Center for British Art, Paul Mellon Fund

Thursday 7 December

6.30 - **Thursday Evening Lecture €10** *Modern Painters, Old Masters: The Art of the Pre-Raphaelites*
Professor Elizabeth Prettejohn, University of York
6.30 - Tour
6.30 - Tour for the Hard of Hearing
6.30 - **RIAM/NGI Concert €10-20** www.riam.ie

Friday 8 December

1.15 - **Pop-Up Talk** (*Burton exhibition ticket required*)

Saturday 9 December

12.30 & 2.30 - Tours

Sunday 10 December

11.30-1.30 - **Drop-in Family Session**
11.30 - Tour
12.30 - Family Tour
1.30 - Tour
3.00 - **Storytelling Session €5**
with Shelby Todd

Monday 11 December

12.00 & 2.00 - **NGI Baby Workshops €5**
Book from 9am, Tuesday 5 December only on www.nationalgallery.ie
2.00 - **New Parents' Tour**

Tuesday 12 December

11.00 - **Talk and Tea €5**
Burton's The Meeting on the Turret Stairs with Dr Katy Milligan
1.15 - **Pop-Up Talk**

Thursday 14 December

1.15 - **Public Talk** *The National Gallery of Ireland: Future Plans*
Sean Rainbird, Director, NGI
6.30 - Tour

Saturday 16 December

12.30 & 2.30 - Tours

December



Photo © Pimlico Project

Sunday 17 December

11.30-1.30 - **Drop-in Family Session**

11.30 - Tour

12.30 - Family Tour

1.15 - **Pop-Up Talk** (*Burton exhibition ticket required*)

1.30 - Tour

Monday 18 December

12.00 & 2.00 - **NGI Baby Workshops €5**

Book from 9am, Tuesday 12

December only on

www.nationalgallery.ie

Tuesday 19 December

1.15 - **Pop-Up Talk** (*Burton exhibition ticket required*)

Thursday 21 December

6.30 - Tour



Frederic William Burton (1816-1900)
The Virgin and Child with Angels, after Hans Holbein the Elder (c.1460-1524)

Saturday 23 December

12.30 & 2.30 - Tours

Sunday 24 December -

Tuesday 26 December

GALLERY CLOSED

Thursday 28 December

6.30 - Tour

Saturday 30 December

12.30 & 2.30 - Tours



Photo © Pimlico Project

Sunday 31 December

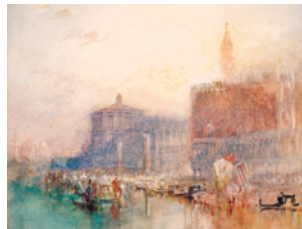
11.30-1.30 - **Christmas**

Family Art Holiday Drop-in Family Session with Artist Sarah Ward

11.30 - Tour

12.30 - Family Tour

1.30 - Tour



Joseph Mallord William Turner (1775-1851)
The Doge's Palace and Piazzetta, Venice, c.1840

January 2018

Tuesday 2 January

1.15 - **Pop-Up Talk**

Thursday 4 January

6.30 - Tour

6.20 - **Burton in**

Conversation Tour (*Burton exhibition ticket required*) with Art Historian Dr Sarah Wilson & Artist Michelle Boyle

Saturday 6 January

12.30 & 2.30 - Tours

Sunday 7 January

11.30-1.30 - **Drop-in Family Session**

11.30 - Tour

12.30 - Family Tour

1.30 - Tour

3.00 - **Lecture** 'Good Morning Mr Turner': Niall Naessens and JMW Turner

Anne Hodge, NGI

Monday 8 January

2.00 - **New Parents' Tour**

Tuesday 9 January

11.00 - **First Fortnight Talk and Tea €5** *Turner* with Shane Morrissy

1.15 - **First Fortnight Pop-Up Talk**

Wednesday 10 January

3.00 - **Burton Project:**

Bealtaine Writers Group Public Reading, Millennium Wing Studio

Thursday 11 January

6.00 - **Film Screening** *Effie Gray*

6.00-8.00 - **Watercolour**

Course with Artist John

Keating, Millennium Wing

Studio **FULLY BOOKED**

6.30 - **Romanticism Art**

Appreciation Course with Dr

Sarah Wilson **FULLY BOOKED**

6.30 Tour

Féilire an Gheimhridh Winter Calendar

January contd.

Friday 12 January

1.15 - **Pop-Up Talk** (*Burton exhibition ticket required*)

Saturday 13 January

10.00-1.30 - **Study Morning**
€20 *Frederic William Burton: A Life Defined by Art*

11.00-5.00 - **F.W. Burton Uncovered:** Library and Archive Display, No. 5 South Leinster Street
12.30 - **First Fortnight** Tour
2.30 - Tour

Sunday 14 January

11.00-5.00 - **F.W. Burton Uncovered:** Library and Archive Display, No. 5 South Leinster Street
11.30-1.30 - **Drop-in Family Session**

11.30 - Tour
12.30 - Family Tour
1.30 - Tour
3.00 - **Lecture** *A Tale of Two Romances: Burton's 'The Meeting on the Turret Stairs'*
Dr Marie Bourke, Curator

Monday 15 January

12.00 & 2.00 **NGI Baby Workshops** €5
Book from 9am, Tuesday 9 January only on
www.nationalgallery.ie

Tuesday 16 January

1.15 - **Pop-Up Talk**
1.15 - **Special Talk:** *Aftermath: The War Landscapes of William Orpen*, Diane Lees, Director-General, Imperial War Museums

Thursday 18 January

5.30 - **Special First Fortnight Screening and Reception**, *Loving Vincent* **€15/12**
6.00-8.00 **Watercolour Course** with Artist John Keating, Millennium Wing Studio **FULLY BOOKED**
6.30 - **Romanticism Art Appreciation Course** with Dr Sarah Wilson **FULLY BOOKED**
6.30 - Tour

Saturday 20 January

12.30 - Tour
1.30 - **First Fortnight In Conversation Tour** with Art Historian Shane Morrissy & Art Therapist Eithne McAdam
2.30 - Tour

Sunday 21 January

11.30-1.30 - **Drop-in Family Session**
11.30 - Tour
12.30 - Family Tour
1.30 - **First Fortnight** Tour
3.00 - **First Fortnight 6+ Family Workshop** with Storyteller Paul Timoney **€5**
3.00 - **Lecture** *Turner, myths and celebrities on the River Rhine*
Adrian Le Harivel, NGI

Tuesday 23 January

1.15 - **Pop-Up Talk**

Thursday 25 January

5.30 - **Film Screening** *Mr Turner* **€5**
6.00 **Flavours of Art** Tour & Meal **€35**
6.00-8.00 **Watercolour Course** with Artist John Keating, Millennium Wing Studio **FULLY BOOKED**
6.30 - **Romanticism Art Appreciation Course** with Dr Sarah Wilson **FULLY BOOKED**
6.30 - Tour

Saturday 27 January

12.30 & 2.30 Tours

Sunday 28 January

11.30-1.30 - **Drop-in Family Session**
11.30 - Tour
12.30 - Family Tour
1.30 - Tour
3.00 - **Lecture** *JMW Turner: An Artist's Perspective*, John Keating, Artist



Joseph Mallord William Turner (1775-1851)
Bellinzona, Switzerland, with the Fortresses of Uri, Schwyz and Unterwalden, 1842

Tuesday 30 January

1.15 - **Pop-Up Talk**

For further information visit:
www.nationalgallery.ie

February

Thursday 1 February

6.30 - *Romanticism Art Appreciation Course* with Dr Sarah Wilson **FULLY BOOKED**
6.30 - Tour

Saturday 3 February

12.30 & 2.30 - Tours

Sunday 4 February

11.30-1.30 - **Drop-in Family Session**
11.30 - Tour
12.30 - **Documentary Screening** *United Ireland*
A film by Ronan McGreevy
12.30 - Family Tour
1.30 - Tour
3.00 - **RIAM/NGI Concert**
€10-20 www.riam.ie

Tuesday 6 February

11.00 - **Talk and Tea €5**
William Orpen and the Aftermath of War with Donal Maguire
1.15 - Pop-Up Talk

Thursday 8 February

6.30 - *Romanticism Art Appreciation Course* with Dr Sarah Wilson **FULLY BOOKED**
6.30 - Tour
6.30 - Tour for the Hard of Hearing

Saturday 10 February

12.30 & 2.30 - Tours



Unknown Artist (first quarter 14th century)
The Virgin and Child, St John the Baptist and Prophets, c.1325

Sunday 11 February

11.30-1.30 - **Drop-in Family Session**
11.30 - Tour
12.30 - Family Tour
1.30 - Tour
3.00 - **Lecture**
The Festival of Russian Culture
An Introduction to Russian Icon Painting with a Focus on Examples from the Collection
Wanda Smolin, Art Historian

Monday 12 February

12.00-1.15 - **4+ Mid-Term Break Camp €40**
2.00 - New Parents' Tour
2.30-4.00 - **8+ Mid-Term Break Camp €60**

Tuesday 13 February

12.00-1.15 - **4+ Mid-Term Break Camp €40**
1.15 **Pop-Up Talk**
2.30-4.00 - **8+ Mid-Term Break Camp €60**

Wednesday 14 February

12.00-1.15 - **4+ Mid-Term Break Camp €40**
2.30-4.00 - **8+ Mid-Term Break Camp €60**
6.30 **Lisa O'Neill Performance: *Bad Romance* €20**

Thursday 15 February

12.00-1.15 - **4+ Mid-Term Break Camp €40**
2.30-4.00 - **8+ Mid-Term Break Camp €60**
6.30 - Tour

Friday 16 February

12.00 -1.15 - **4+ Mid-Term Break Camp €40**
2.30-4.00 - **8+ Mid-Term Break Camp €60**

Saturday 17 February

12.30 & 2.30 - Tours

Sunday 18 February

11.30-1.30 - **Drop-in Family Session** in association with Dublin Chinese New Year Festival
11.30 - Tour
12.30 - Family Tour
1.30 - Tour
3.00 **Lecture** *Unveiling a Stained Glass Masterpiece: Harry Clarke's 'The Mother of Sorrows'*
Maria Canavan, NGI

Monday 19 February

12.00 & 2.00 **NGI Baby Workshops €5**
Book from 9am, Tuesday 13 February only on www.nationalgallery.ie

Tuesday 20 February

1.15 - **Pop-Up Talk**

Thursday 22 February

6.30 - Tour

Saturday 24 February

12.30 & 2.30 - Tours



Emil Nolde (1867-1956)
Two Women in a Garden, 1915
© Nolde Stiftung Seebüll

Sunday 25 February

11.30-1.30 - **Drop-in Family Session**
11.30 - Tour
12.30 - Family Tour
1.30 - Tour
3.00 - **Lecture** *Emil Nolde An Introduction*
Sean Rainbird, Director, NGI

Tuesday 27 February

1.15 - **Pop-Up Talk**

Eolas do Chuaireoirí

Visitor Information

Visit

Admission is free to the permanent collection. Admission charge may apply to temporary exhibitions.

Opening Hours

Mon-Sat: 9.15am – 5.30pm

Thu: 9.15am – 8.30pm

Sun: 11.00am – 5.30pm

Closed: Good Friday and 24–26 December

Entry ceases 15 minutes before Gallery closing times.

Visitors are advised to contact the Gallery in advance of their arrival to confirm collection displays and opening hours.

On Arrival

Please deposit your umbrellas, ruck-sacks and bags in the cloakrooms. Large luggage will not be accepted.

Access

Access to all levels. Disabled parking bays on Merrion Square West. Wheelchairs available on request.

T + 353 (0) 1 661 5133

E visitorexperience@ngi.ie

Safety in the Gallery

Children should be accompanied by an adult during their visit.

Wifi

Free wifi is available throughout the Gallery.

Public Photography Policy

Photography and filming is not permitted in temporary exhibitions; where artworks are in copyright or on loan; or where the “No Photography” symbol is marked on display labels. No use of selfie sticks, tripods or lights.

Commercial Filming & Photography

Book **in advance** through the Images & Licensing Department.

T + 353 (0) 1 663 3526/27

Mon-Fri: 9am-5pm

E images&licensing@ngi.ie

Shop

Millennium Wing.

T +353 (0) 1 663 3518

E shop@ngi.ie

Café

Millennium Wing.

Explore & Learn

Find out more about our learning programme.

T + 353 (0) 1 663 3505

E education@ngi.ie

Self-Guided Groups

Advance booking is required for groups of over 10 people.

See **www.nationalgallery.ie**

Prints & Drawings Room

View works on paper from the Gallery's collection by appointment. Tue-Fri: 10am-5pm. **T** + 353 (0) 1 663 3535

E drawings@ngi.ie

Art Library

The fine art reference library holds one of Ireland's most comprehensive bibliographic and archival collections. Mon-Fri: 10am–5pm **T** + 353 (0) 1 663 3546 **E** library@ngi.ie

ESB CSIA

The ESB Centre for the Study of Irish Art documents the country's rich artistic legacy from early Celtic art to the present day. **T** + 353 (0) 1 632 5517 **E** csia@ngi.ie

Venue Hire

Beautiful gallery spaces available for hire for private and corporate events.

T + 353 (0) 1 663 3512

E corporateevents@ngi.ie

Become a Friend

Friends of the National Gallery of Ireland enjoy free entry to exhibitions; a Members' room; special previews; talks and tours. **T** + 353 (0) 1 661 9877

E friends@ngi.ie

Support

Donations welcome. For information on donations and partnerships: **T** 663 3565

E development@ngi.ie

Contact Us

National Gallery of Ireland, Merrion Square & Clare Street Dublin D02 K303


T +353 (0) 1 661 5133

E info@ngi.ie

W nationalgallery.ie

Follow & Share

 [@NGIreland](https://twitter.com/NGIreland)

 [nationalgalleryofireland](https://www.facebook.com/nationalgalleryofireland)

GAILEARAÍ
NÁISIÚNTA
hÉIREANN



NATIONAL
GALLERY
of
IRELAND

Booklet © NGI. All images are copyright of the National Gallery of Ireland unless otherwise credited. ISSN 0791-3892

Cover image:

Emil Nolde (1867-1956), *The Pharaoh's Daughter finds Moses*, 1910, (detail) © Nolde Stiftung Seebüll