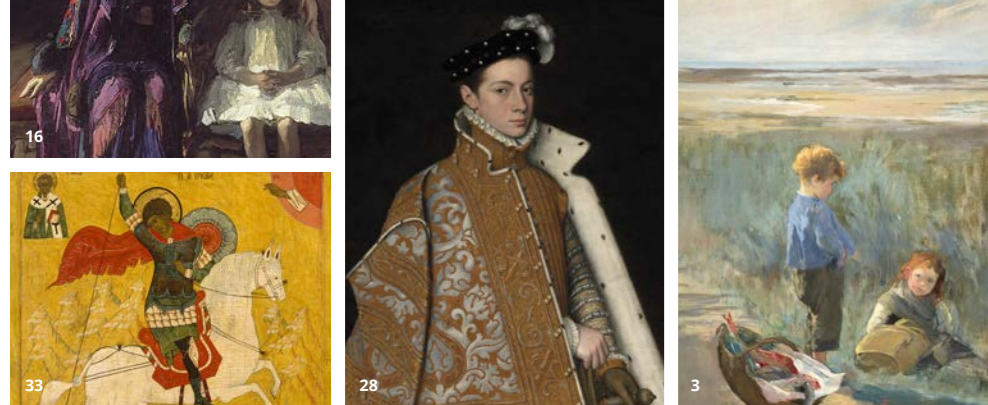
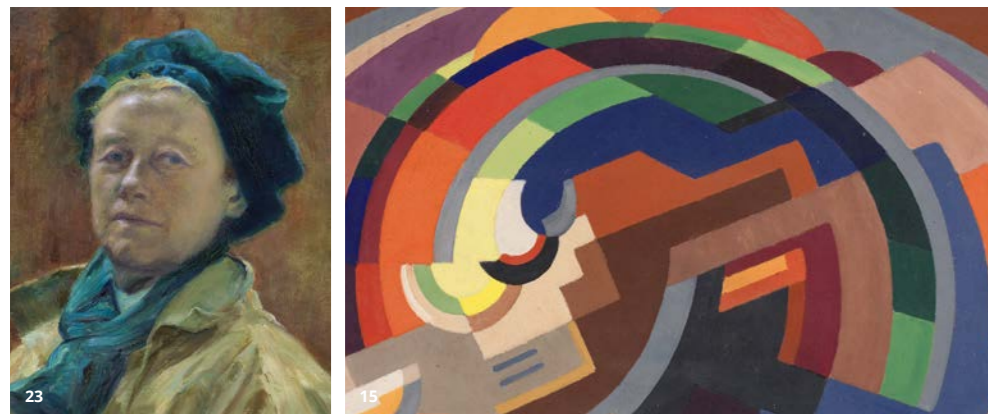
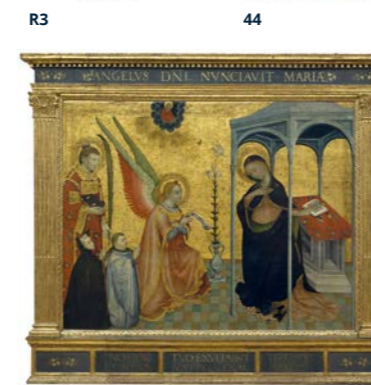


Our Gallery At a glance...



The National Gallery of Ireland houses the national collection of fine art.



32

Discover More...



Nathaniel Hone the Elder *The Conjurer*

Richard Moynan *Military Manoeuvres*

Harry Clarke *The Song of the Mad Prince*

Visiting with Children

- Free children's audio guides available at Information Desks
- Creative Kits (free to borrow) available at Information Desks
- Drop in creative spaces
- Children's workshops

Enhance your visit with free pop up talks and guided tours, free audio guides for adults available at information desks, drop in creative spaces and free lectures and film screenings.

Artistic activities are offered for all ages, abilities and interests. Pick up a copy of the Education & Public Programme or visit our website to find out more.

T + 353 1 6633505 E education@ngi.ie

Explore Irish Art

- Shaw Room**
 - Room 22, Dargan Wing, Level 1
- Irish Art 1660–1835**
 - Room 21, Dargan Wing, Level 1
- Stained Glass Collection**
 - Room 20, Milltown Wing, Level 1
- Irish Art 1835–1965**
 - Rooms 14–19, Milltown Wing, Level 1
- Jack B. Yeats**
 - Room 14, Milltown Wing, Level 1
- National Portrait Collection**
 - Room 23, Dargan Wing, Level 2

Enjoy Your Visit

Visit
Admission to the permanent collection is free. Admission charges for some temporary exhibitions may apply.

Opening Hours
MON - SAT: 9.15am – 5.30pm
THU: 9.15am – 8.30pm
SUN: 11.00am – 5.30pm
CLOSED: Good Friday
24 – 26 December

Opening hours are subject to change. Entry ceases **15 minutes** before Gallery closing times. We advise visitors to confirm collection displays in advance as some artwork may not be on display.

Shop
Located in the Millennium Wing, the shop offers a fantastic choice of prints, gifts and books, inspired by the Gallery's collection. The shop will close 15 minutes before the Gallery closes.
T + 353 1 6633518
E bookshop@ngi.ie

Eat
Visit the Gallery café located in the Millennium Wing at Clare Street entry level.
E ngi@itsa.ie

Explore & Learn
Get more out of your visit by taking part in a workshop, attending a lecture, joining a tour, and more.
T + 353 1 6633505
E education@ngi.ie

Support
Donations welcome. The generosity of our visitors, benefactors and Corporate Partners helps us care for the collection and sustains public programming. For information on donations and partnerships:
T + 353 1 6633565
E development@ngi.ie

Research
Art Library: The Art Library holds one of Ireland's most comprehensive bibliographic and archival collections relating to the history of art. For information:
T + 353 1 6633546
E library@ngi.ie

ESB Centre for the Study of Irish Art: The ESB CSIA's library and archive collection documents the country's rich artistic legacy from early Celtic art to the present day. For information:
T + 353 1 6325517
E csia@ngi.ie

Friends membership
Members enjoy free entry to exhibitions, access to the Members' room, special previews, lectures, talks and tours. Join at the Friends' desk or:
T + 353 1 6619877
E friends@ngi.ie

Website
Check out our website at nationalgallery.ie for more information.

Gallery Map

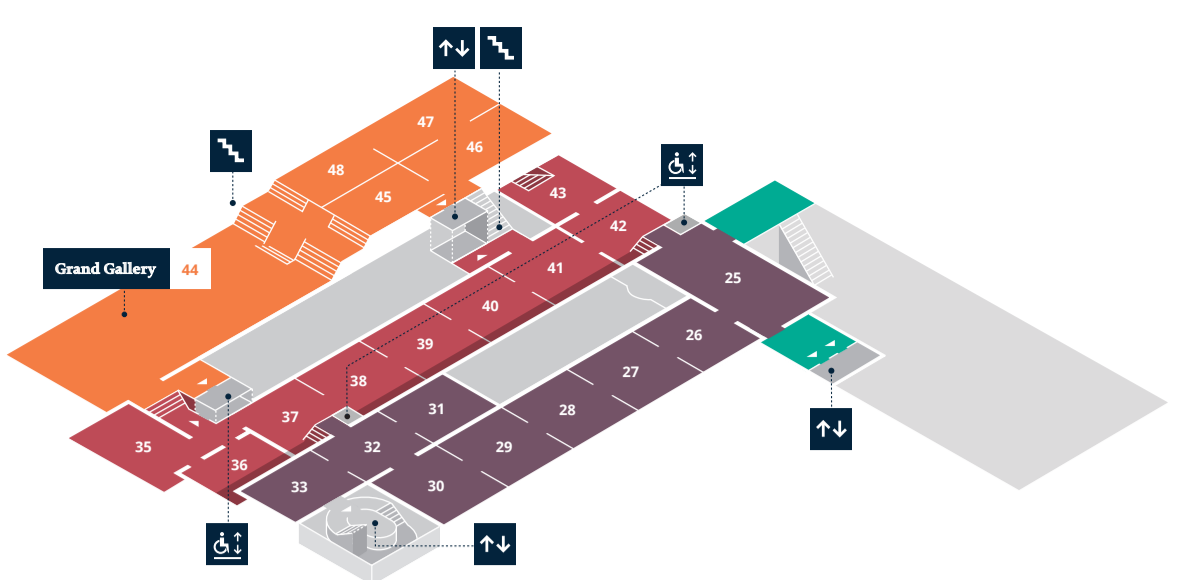


Admission is free. Donations welcome.

Become a member today!

See 'Friends membership' above for details.

3



Rooms

● 31	Temporary exhibitions
● 25-33	European Art 1300-1650
● 34	Temporary exhibitions
● 35	Members' Room
● 37-43	European Art 1600-1700
● 44	Grand Gallery
● 44-48	European Art 1700-1850

Wings

● Beit Wing
● Dargan Wing
● Milltown Wing

Collection Highlights



● Room 30
Perugino
The Lamentation over the Dead Christ



● Room 37
Rembrandt
Landscape with the Rest on the Flight into Egypt

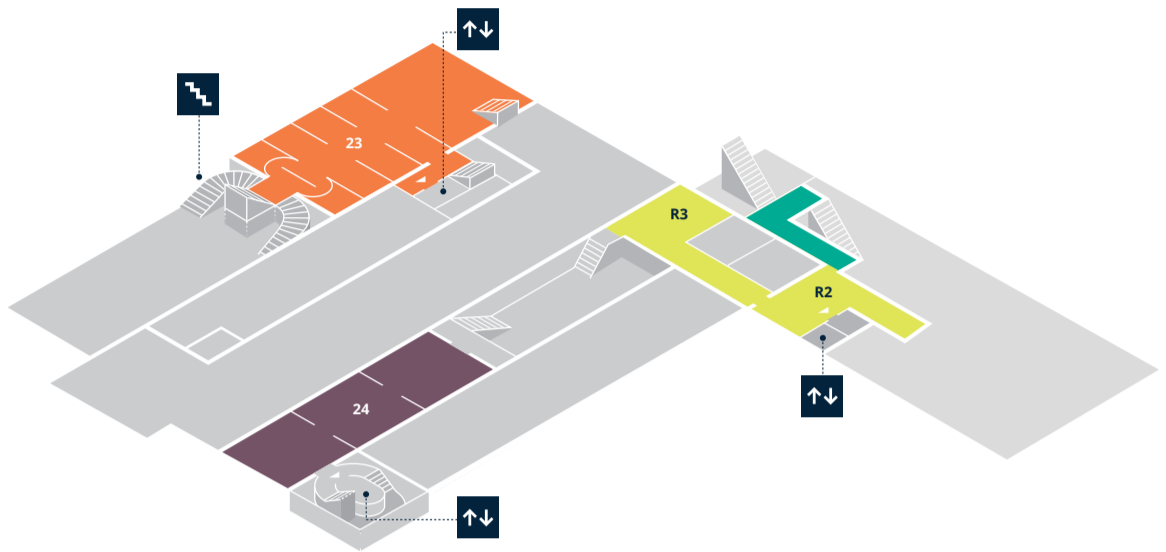


● Room 40
Diego Velázquez
Kitchen Maid with the Supper at Emmaus



● Room 44
Joshua Reynolds
Charles Coote, 1st Earl of Bellamont

2



Rooms

● 23	National Portrait Collection
● 24	Print Gallery
● R2	ESB Centre for the Study of Irish Art*
● R3	Prints & Drawings Study Room*

*By appointment

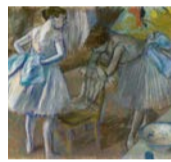
Wings

● Beit Wing
● Dargan Wing
● Research Area

Collection Highlights



● Room 23
William Orpen
Portrait of John Count McCormack, Tenor



● Room R3
Edgar Degas
Two Ballet Dancers in a Dressing Room

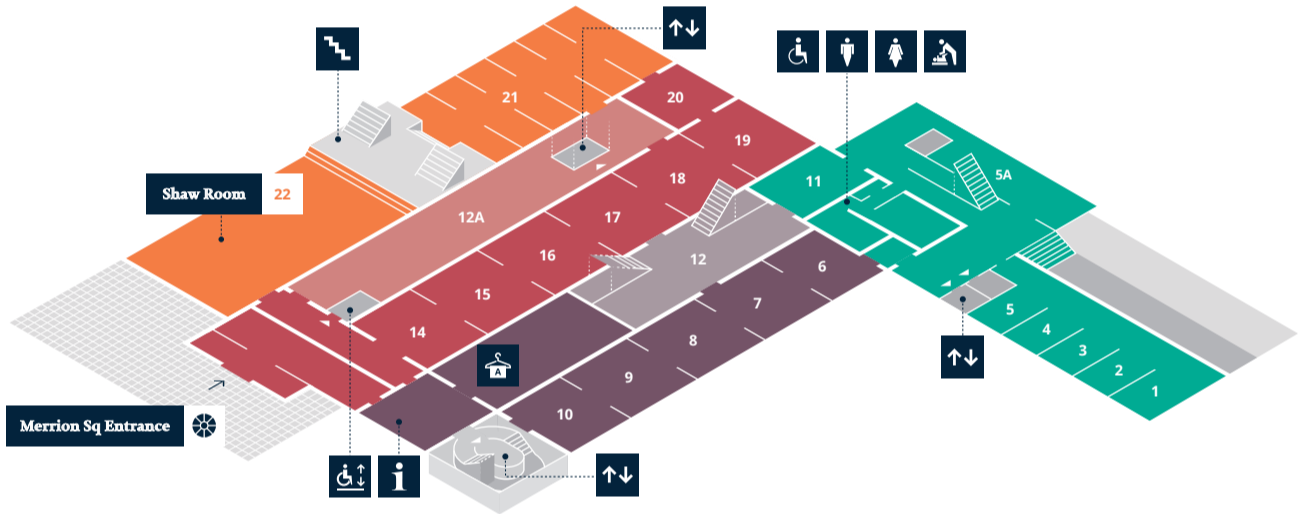


● Room R2
Walter Osborne
Photograph of the Artist in his Studio



● Room R3
Adriaen Collaert
St. Patrick

1



Rooms

● 1-5	European Art 1850-1950
● 5A	Millennium Wing Studio
● 6-10	Temporary exhibitions
● 11	Library & Archive Gallery
● 14	Jack B. Yeats
● 14-19	Irish Art 1835-1965
● 20	Irish Stained Glass
● 21	Irish Art 1660-1835

Wings

● Beit Wing
● Atrium (12)
● Dargan Wing
● Millennium Wing
● Milltown Wing
● Courtyard (12A)

Collection Highlights



● Room 3
Claude Monet
Argenteuil Basin with a Single Sailboat



● Room 5
Pablo Picasso
Still Life with a Mandolin

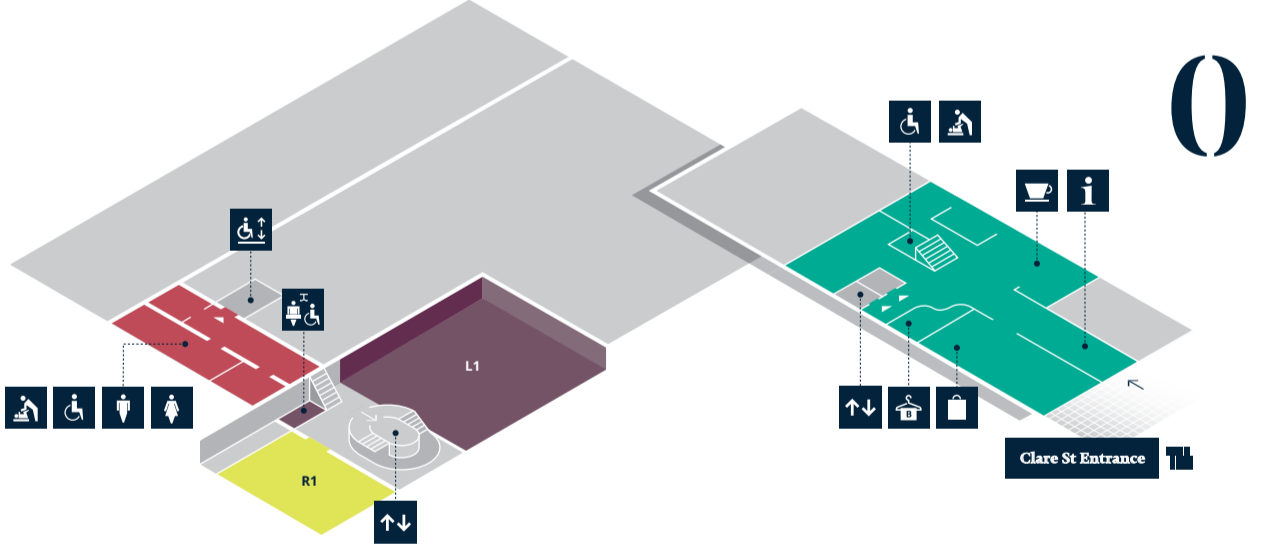


● Room 14
Jack B. Yeats
The Liffey Swim



● Room 20
F. W. Burton
The Meeting on the Turret Stairs — Limited viewing hours

-1



Rooms

● R1	Library & Archives
● L1	Lecture Theatre

Map Key

	Clare St Entrance		Male Toilet
	Merrion Sq Entrance		Female Toilet
	Cafe		Accessible Toilet
	Shop		Baby Changing
	Information		Changing Room
	Cloakroom A		No Large Bags
	Cloakroom B		No Food or Drink
	Lifts		Mobile Phones on silent
	Accessible Lift		No Photography

We advise visitors to confirm as some artworks may not be on display.

Help us care for the collection
Please leave your umbrellas, rucksacks and bags in the cloakrooms. Large luggage will not be accepted.

Photographs and video are allowed for personal (non-commercial) use with the exception of artworks in copyright. Photography and filming is not permitted in temporary exhibitions or where specifically indicated. Adults and children should stay together during their visit. Please enjoy the collection without touching it.

Wifi
Free wifi is available throughout the National Gallery of Ireland.

Access
There is full access to the galleries and a wide range of accessible services. Disabled parking bays are available on Merrion Square West and wheelchairs are available upon request.
T + 353 1 6615133
E visitorexperience@ngi.ie

Contact Us
National Gallery of Ireland, Merrion Square & Clare Street Dublin 2
T + 353 1 6615133
E info@ngi.ie

Sign up for our newsletter:
E visitorexperience@ngi.ie